

Jersey County, Illinois Highpoint

Previously we have picked the COHP (Point 1) at the intersection of Army Drive and Scenic Drive in Pere Marquette State Park based on the Brussels 7.5' USGS topo sheet (1954). This map shows a closed contour with an elevation of 900', and with a contour interval of 10' that would interpolate to 905'.

However, when I processed the LiDAR for this county, I discovered that this point is in fact at an elevation of 889.6', or ~15' lower than previously thought. The USGS Brussels 15' (1939) minute sheet shows only a closed contour of 880' which at the 20' CI would interpolate to 890'.

There is no doubt that the 1954 topo map has an erroneous contour. I used my laser hypsometer to determine the field elevation from the intersection of Scenic and Army for Point 1 and it calculated less than 20' of differential elevation.

I have identified a new COHP that has not been previously noted. I have labeled this as Point 4 and it is located to the east of Point 1, and it is also in the State Park. The LiDAR elevation for this point is 896.9'. The LiDAR ties exactly with the GPS station just to the north. The USGS Grafton 7.5' topo sheet shows a closed contour here with a value of 890'. With a 10' contour interval that would allow an elevation of 895'. Interestingly, the St. Charles 15' USGS sheet (1929) shows a spot elevation here of 897'.

There is enough evidence here to re-designate the COHP to the new point at Point 4. Although Point 1 is no longer the COHP, it still retains a rise of 307', which allows it to retain the IL State Rank of #9. I would propose that it be renamed Peak 890 as there is no designation for it on the USGS maps or on the state park website.

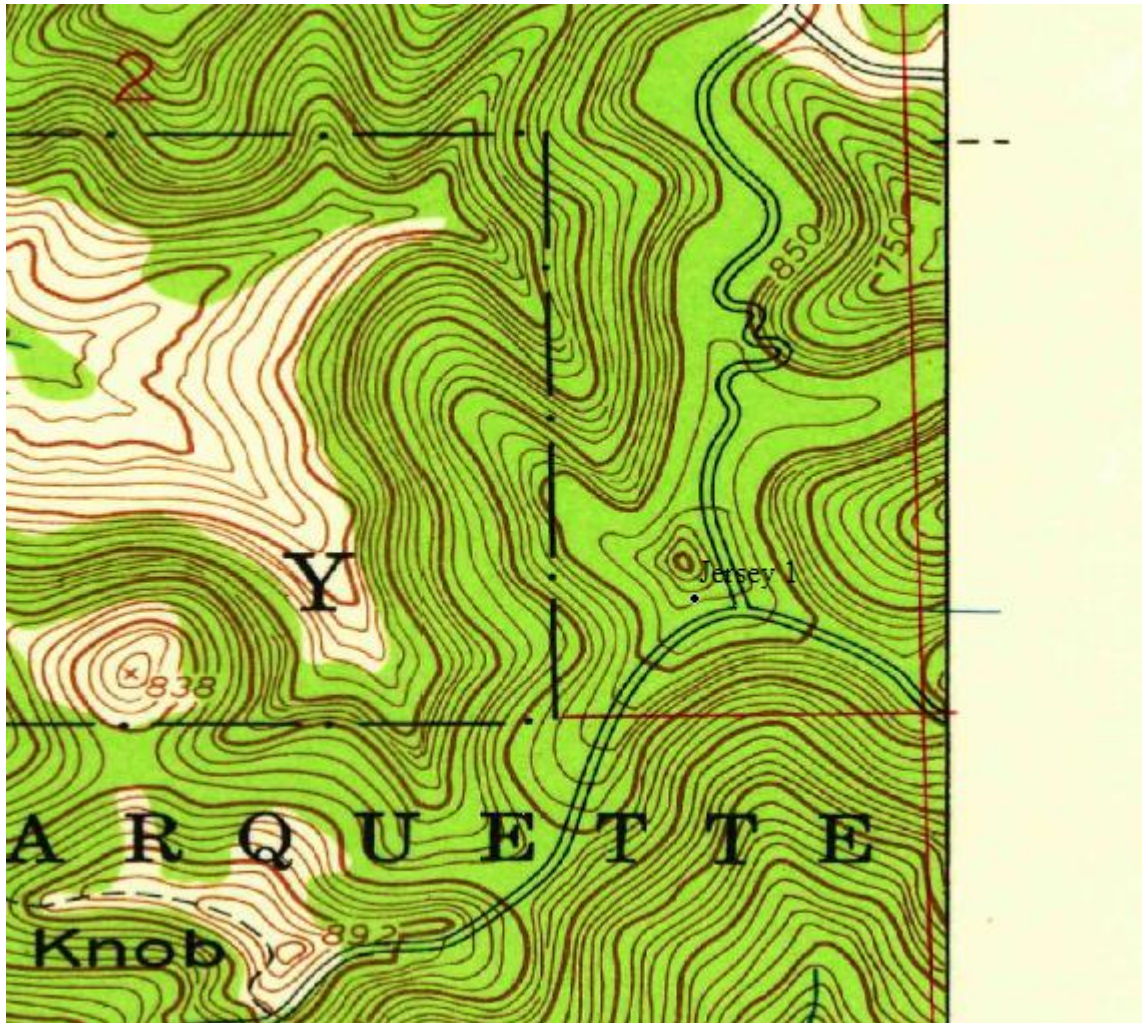
LINKS:

<http://listsofjohn.com/peak/138266>

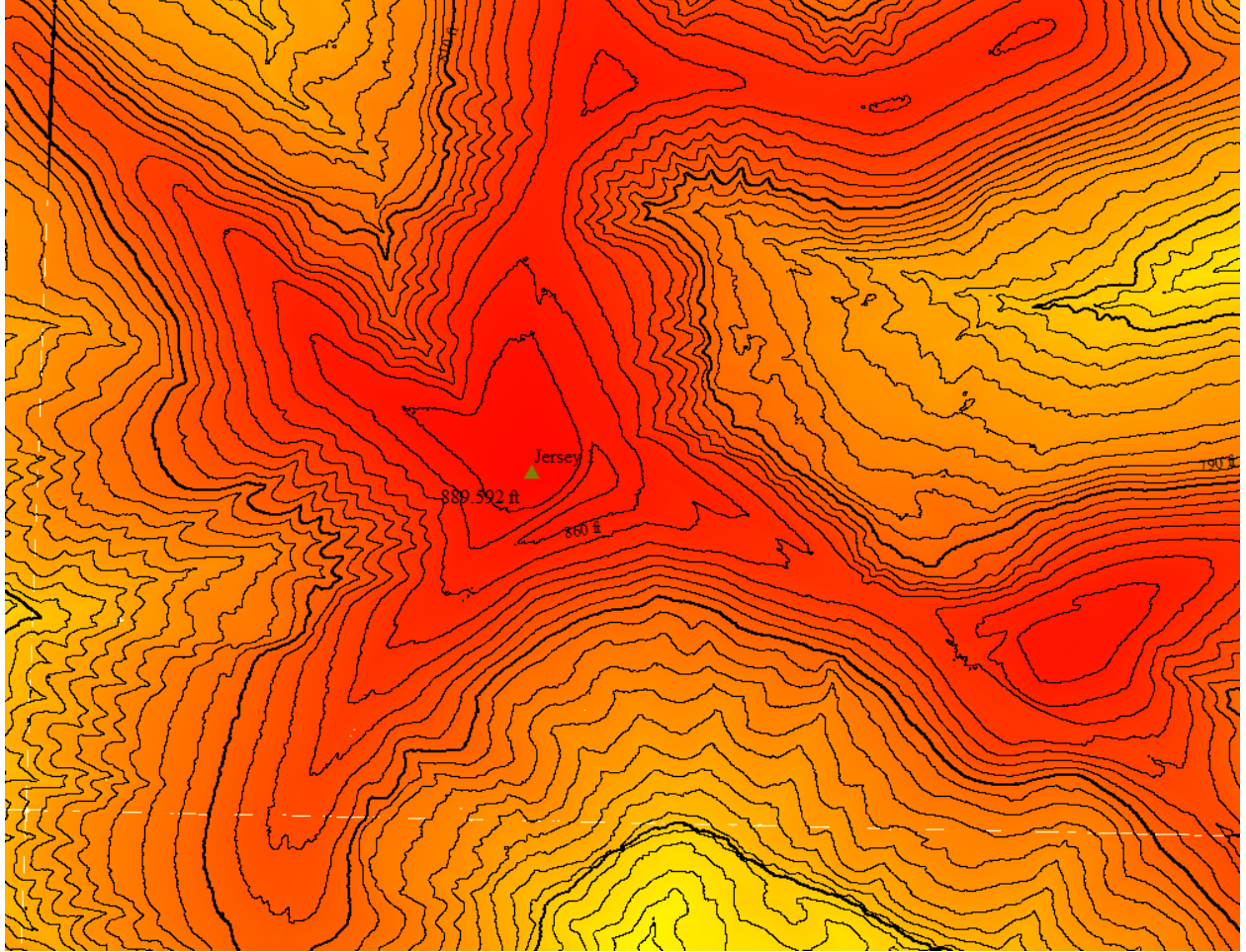
<http://peakbagger.com/peak.aspx?pid=6509>

COHP LABEL	COHP COORDS		ELEV	LIDAR		LIDAR ELEV	COMMENTS
	LAT	LON		LAT	LON		
Jersey 1	38.98684	-90.50345	905	38.98638614	-90.50322657	889.592	Intersection Scenic Dr. & Army Rd.
Jersey 2	39.00138	-90.49400	895	39.00058271	-90.49348136	876.326	Edge of pasture near residence.
Jersey 3	39.00109	-90.48432	895	39.00110961	-90.48437839	887.900	Pasture south of Powerline Rd.
Jersey 4			895	38.99347817	-90.47833932	896.869	Winner! New point at edge bean field and brush.

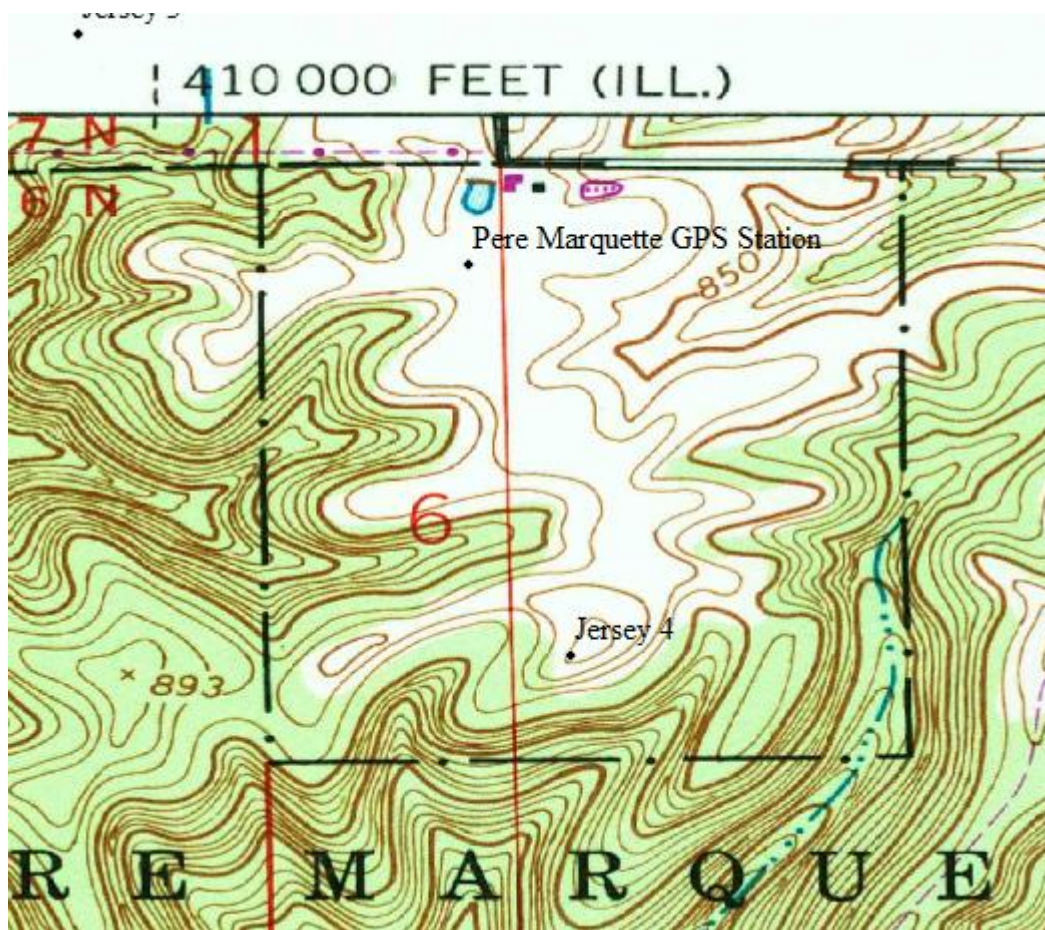
Results of Jersey County, IL LiDAR



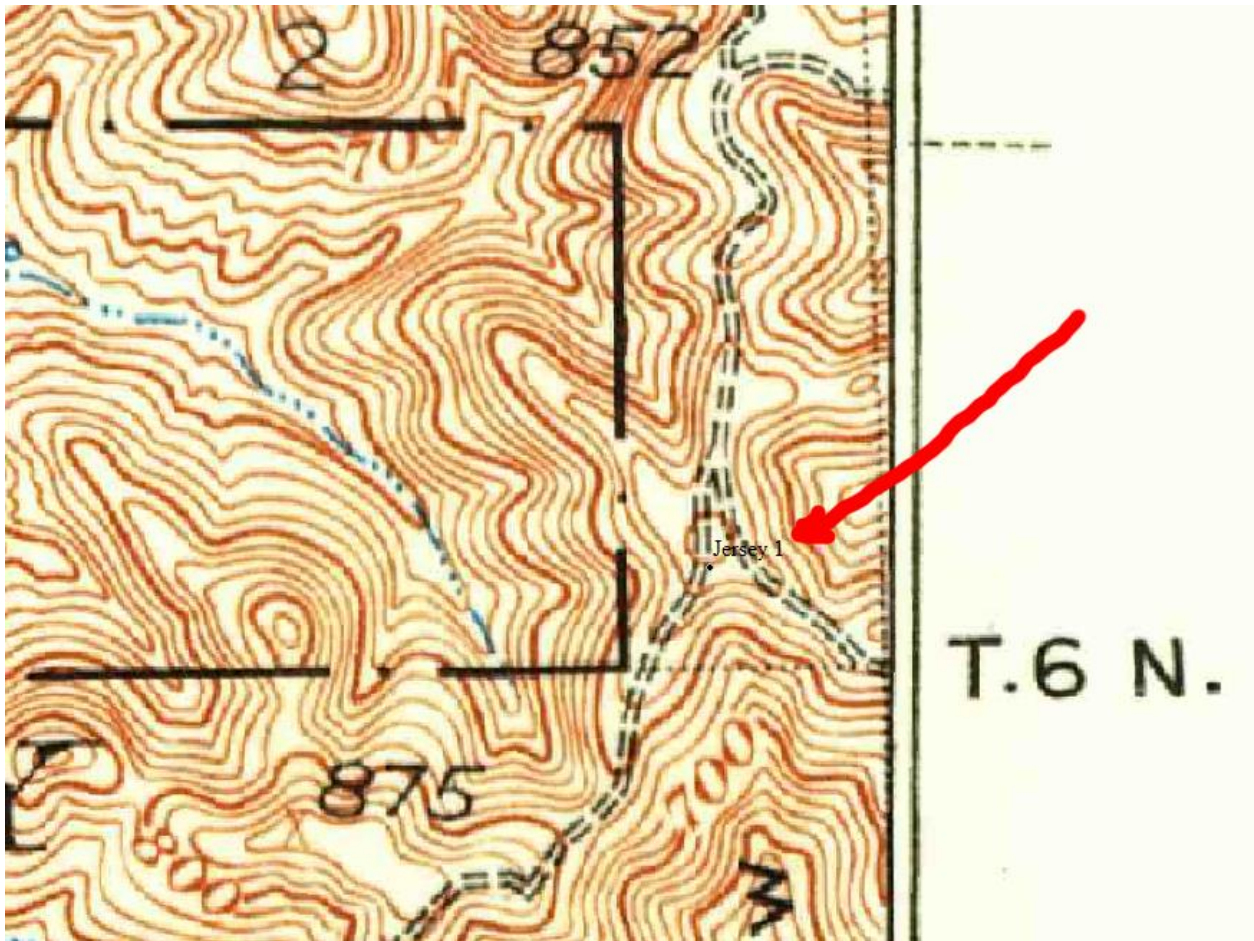
USGS Brussels 7.5' (1954) topo map showing Point #1



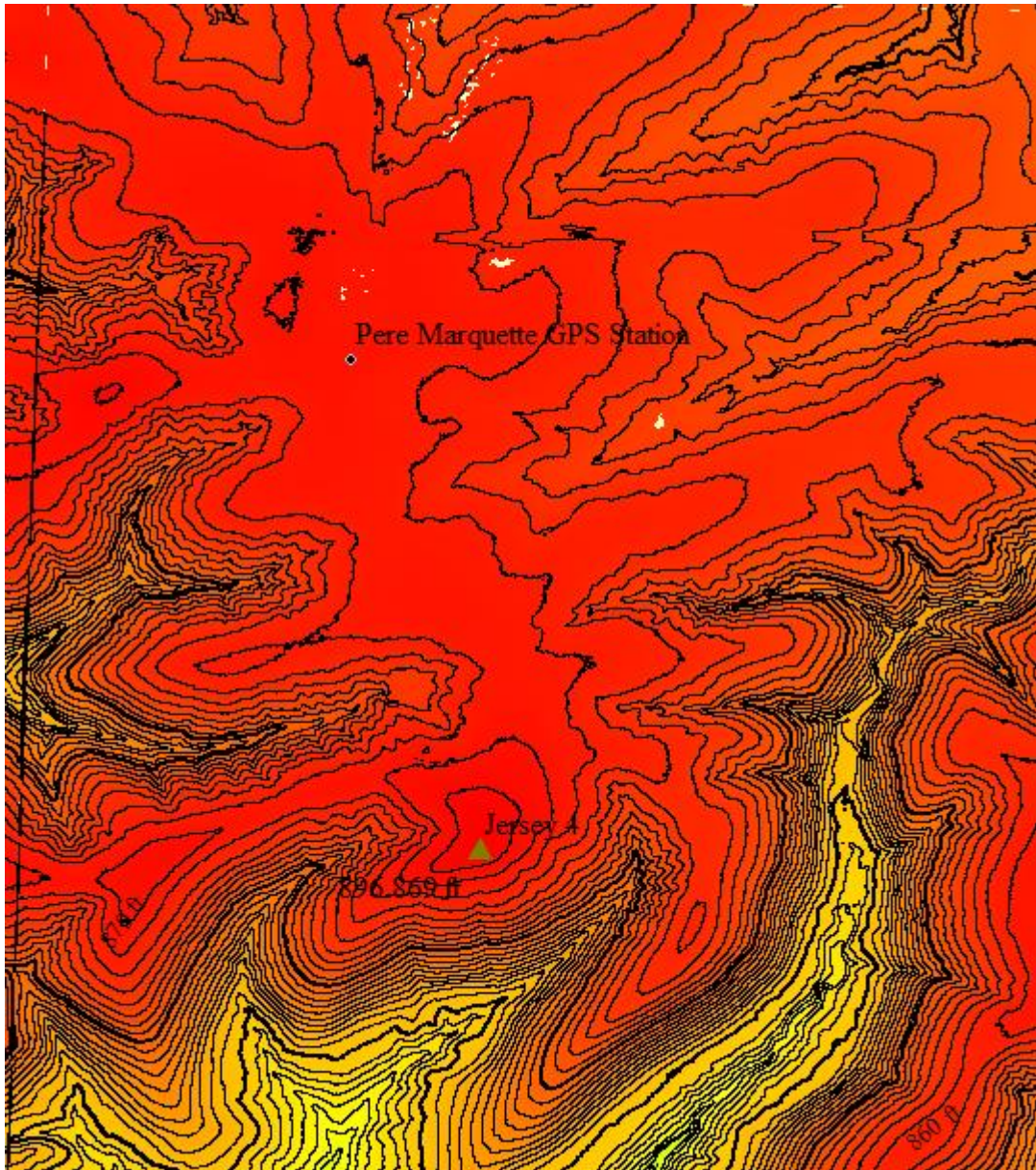
Jersey County, IL LiDAR Point 1



USGS Grafton 7.5' topo map showing Point #4



Brussels USGS 15' Topo Showing Jersey COHP Point 1



Jersey County, IL Highpoint #4 (New) LiDAR



St. Charles USGS 15' Topo (1929) showing Jersey COHP #4 (New) and spot elevation of 897'.